

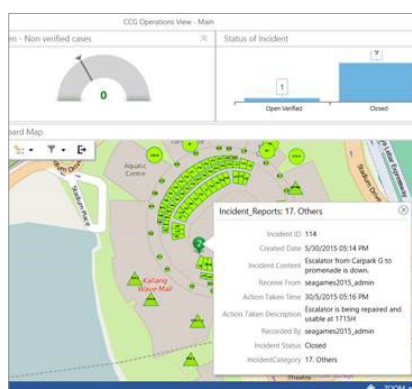


GIS technology equips Southeast Asian Games command centre with bigger picture

The organising committee – made up of the Command and Control Group (CCG) and the Spectator Management Group (SMG) – turned to Esri Singapore to streamline the planning and operations of the opening and closing ceremonies.

The Southeast Asian (SEA) Games is ASEAN's most celebrated multi-sporting event and draws thousands of spectators from across the region to the host country.

In its 28th year, the SEA Games returned to Singapore on 5–6 June 2015, which coincided with the island nation's festivities for its 50th year of independence.



As the 28th SEA Games' official Smart Map partner, Esri Singapore created an operational dashboard designed to equip the CCG, SMG, and 200 national service men (NSF) volunteers in the Singapore Sports Hub with real-time actionable information they can access anytime, anywhere.

The hosting of the 28th SEA Games was a large-scale logistical exercise. It required impeccable planning to ensure organisers were able to effectively mobilise its workforce – which included 17,000 volunteers – across 30 venues throughout the city and help 7,000 athletes reach their respective sporting events on time.

To prepare for the event, the organising committee – made up of the Command and Control Group (CCG) and the Spectator Management Group (SMG) – turned to Esri Singapore to streamline the planning and operations of the opening and closing ceremonies.

As the 28th SEA Games' official Smart Map partner, Esri Singapore created an operational dashboard designed to equip the CCG, SMG, and 200 national service men (NSF) volunteers in the Singapore Sports Hub with real-time actionable information they could access anytime, anywhere.

Esri Singapore supplemented the traditional movement tracking by providing the volunteers with mobile devices – which were preinstalled with Collector for ArcGIS – making it easier for on-ground personnel to communicate with the Command Post and vice versa.

The dashboard then integrated and analysed information from the volunteers and the CCTVs around the Sports Hub, and presented it on an organised map view for better operational awareness.

This approach allowed all the concerned stakeholders to make quick and informed decisions and effectively manage the rapidly changing dynamics of activities happening on the ground, including:

- The operations and coordination of the opening and closing ceremonies;
- Potential crowd safety risks and on-the-ground issues; and,
- Traffic conditions around the Singapore Sports Hub.

Traditionally, an event's Command Post relies on time-consuming processes to organise and communicate critical aspects of the event across various stakeholders.

With GIS technology, the Command Post and on-ground personnel were provided with greater situational awareness of the opening and closing ceremonies, and the ability to confidently make decisions instantly.

COL Michael Ma, Deputy Chairman of Opening and Closing Ceremonies said, "We were pleased to have Esri Singapore come on board as a 28th SEA Games sponsor. As hosts of the 28th SEA Games, we wanted to provide all athletes and spectators with a great experience. The smart maps developed by Esri Singapore enhanced our effectiveness in making well-informed decisions."

"With GIS technology, the committee was provided with the capability to understand and anticipate incidents and respond quickly with effective interventions by deploying the right resources to the right place at the right time," Mr Ma said.

"We were pleased to have Esri Singapore come on board as a 28th SEA Games sponsor. As hosts of the 28th SEA Games, we wanted to provide all athletes and spectators with a great experience. The smart maps developed by Esri Singapore enhanced our effectiveness in making well-informed decisions."

COL Michael Ma, Deputy Chairman of Opening and Closing Ceremonies



Discover the value Esri Singapore's GIS technology solutions will bring to your organisation. Call us on 6742 8622 today.